



Play, Annotate and Prepare your content for Archive and Distribution

theScribe is a full-featured MXF creation and annotation tool. It allows you to annotate any MXF file with rich metadata descriptions enabling you to organize your assets and to quickly integrate your MXF devices in your workflow. TheScribe features Sony XDCAM/e-VTR, Panasonic P2, Ikegami EditCam, Grass Valley Infinity, MXF support and it is available in Lite and Pro version.

Get your MXF & GXF files into your desktop.

Package your XML metadata with your MXF file

Annotate your MXF files with descriptive Metadata.

And keep your metadata throughout the production chain

Create MXF Files



Extract essence and metadata from your MXF Files



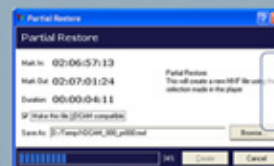
Automatically conform XDCAM EDL's



MXF conversion between MXOP1a and OPAtom files



Create sub MXF clips with MXF PartialRestore



| FEATURE COMPARISON  | theScribe LITE | theScribe PRO |
|---|----------------|---------------|
| <b>SUPPORTED PLATFORMS*</b>   |                |               |
| MXF and GXF files Playback<br>(play MXF and GXF files)  | ✓              | ✓             |
| MXF Metadata Update<br>(merge the XML Metadata coming from MXF devices into the MXF file)                       | ✓              | ✓             |
| MXF Import<br>(create MXF files with various Essence Formats)   |                | ✓             |
| MXF Export<br>(unwrapp essence and metadata from your Mxf files and convert them into AVI or MPEG)              |                | ✓             |
| MXF OP Conversion<br>(convert between Op1A and OPAtom)  |                | ✓             |
| MXF Partial Restore<br>(generation od MXF subclips from in/out timecodes)                                       |                | ✓             |
| Network Interface<br>(ftp access to mxf device (xdcam & e-vtr plug-in included)                                 |                | ✓             |
| XDCAM EDL Conforming<br>(create a frame-accurate high resolution MXF file from a EDL generated with Sony PDZ-1) |                | ✓             |
| <b>OPERATIONAL PATTERNS</b>   |                |               |
| OP1A and OPAtom   | ✓              | ✓             |
| OP1B, OP1C  |                | ✓             |
| OP2A, OP2B, OP2C  |                | ✓             |
| OP3A, OP3B, OP3C  |                | ✓             |
| <b>MXF METADATA SUPPORT</b>   |                |               |
| Structural Metadata SMPTE 377M  | ✓              | ✓             |
| Descriptive Metadata Scheme 1 S380M<br>Editable storyboard with keyframe  | ✓              | ✓             |
| <b>SYSTEM REQUIREMENTS</b>  |                |               |
| Microsoft Windows® XP or Windows® 2000*   | ✓              | ✓             |
| Microsoft Windows Media Player 9  | ✓              | ✓             |
| * Also requires Microsoft Internet Explorer 6 and Microsoft DirectX® 8.1 runtime                                |                |               |

To customize theScribe with your data model scheme, please contact us at [info@mog-solutions.com](mailto:info@mog-solutions.com)



Rua Eng.º Frederico Ulrich, 2650 - 4470-605 Moreira da Maia - Portugal  
 Tel.: +351 229 408 224 - Fax: +351 220 913 581 - [info@mog-solutions.com](mailto:info@mog-solutions.com)  
[www.mog-solutions.com](http://www.mog-solutions.com)